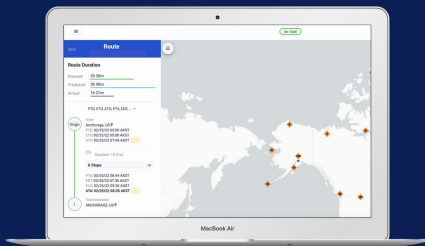


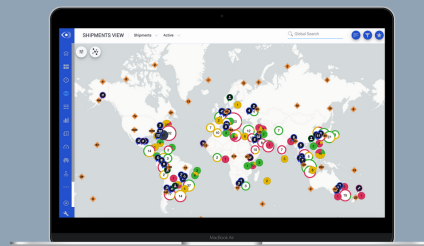
Retailers Need Live End-to-end Supply Chain Intelligence to Provide Customers a World-class Experience

YOUR CUSTOMERS EXPECT...

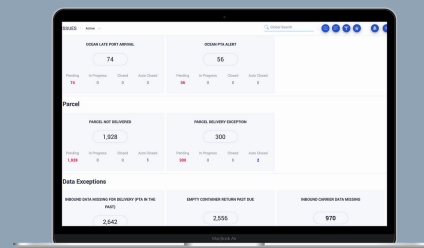
YOUR EMPLOYEES & TRADING PARTNERS NEED TO...



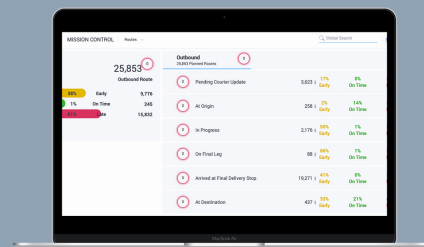
- ✓ accurate product availability
- ✓ estimate lead times and cost to ship
- ✓ receive order fulfillment status (pre-ship)
- ✓ estimated deliver date (post-ship)
- ✓ real-time delivery status updates in transit
- ✓ delay notifications at any point in the process
- ✓ easy return process



Improve collaboration using a "Single Source of Truth" to support daily operations of cross-functional and trading partner teams



Automate the ability to manage by exception and proactively intervene to resist and recover when delay/disruptions occur



Reduce stock-outs and lost sales by right-sizing inventory and setting buffers using true lead times and variances for each SKU - real-time location and accurate predicted arrival time

Ready to get started?

Precise Predictive Enterprise™ solution bridges a retailers' functional silos to provide an end-to-end view of its supply chain - inbound containers, shipments, inventory, orders, availability, sales and final-mile deliveries enabling greater collaboration and optimization of processes.

info.transvoyant.com/contact



E-commerce & Store-level Insight

Order-level visibility & inbound inventory views to drive stocking decisions by product & stores



International & Domestic Logistics

Live predictive tracking with actionable intelligence to better manage transport spend, carrier & network performance



Operations & Distribution

Real-time views and management of incoming goods to balance workload, capacity & labor



Customer Support

Proactive tracking of all orders & alerting of disruptions to enhance customer communication