

# LIVE GLOBAL SUPPLY CHAIN SITUATIONAL AWARENESS

If your supply chain is global, then you must have transparency to its performance and behavior, in real time, anywhere on the planet.

## Why Stop There? You Also Need To Check These Boxes

- Accurately predict customer delivery times
- Assess revenue impacts and prioritize orders when delays occur
- Optimize inventory, labor, capacity, and service with true lead times & variances
- Assess and collaborate with trading partners to ensure service levels are met
- Automate exceptions and notifications using your unique business rules
- Assess risks to service levels due to timeliness and availability of supply, manufacturing capacity, inventory on hand, distribution capacity, lead times, variability and external factors (e.g. temperature) surrounding your supply chain
- Collaborate internally across silos and externally with partners and customers
- Integrate with, but be independent of existing technology, IoT and service providers

## Top-down Is The Winning Approach

Whether you prefer to develop these capabilities in-house or rely on third-party service providers, successful outcomes are only achieved by executing a top-down program with buy-in from senior leadership – CEO, CSCO, CFO, COO, President, Sales Leadership, Service Leadership, and Global Delivery Leadership.

## Validated Outcomes

**\$25M**

In cost avoidance due to proactive intervention to save shipments – Top 5 global pharmaceutical company.

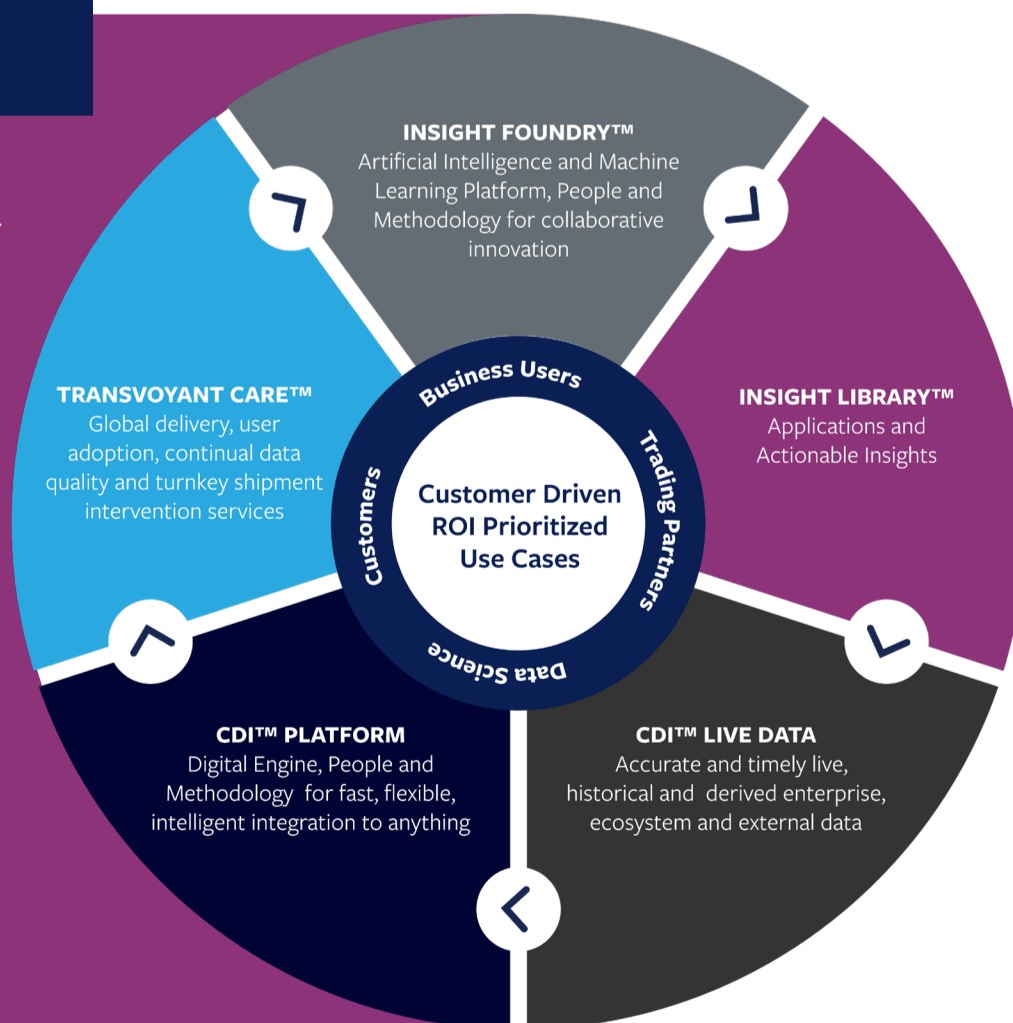
**95% OTIF**

Proactive customer service for **270K+ daily deliveries** using live courier tracking, digital proof of delivery and automated notifications across **19K routes** – World’s largest pharma distributor.

Improve customer service by 3% and recalibrate inventory/safety stock levels during a transition from an 85% air freight delivery model to an 80% ocean freight model – leading global electronics manufacturer.

## Support For The Entire Journey

- **Insight Library** provides existing insights to deliver rapid time to value.
- **Insight Foundry** provides ability to quickly and cost-effectively add new customer-driven insights.
- **TransVoyant Care** provides intervention, logistics and data services to fill gaps in a customer’s team.
- **CDI Live Data** provides curated data from ecosystem, external and derived sources.
- **CDI Platform** provides the streaming big data capabilities, ML/AI and intelligence to support live global supply chain situational awareness and predictive insight.



Founded in 2012, TransVoyant is purpose built to turn complex supply chains into a competitive advantage. The digital world changes each day. We enable visionary customers to profit from this change.

Want more details? Great! Let’s talk...

[Request a Call](#)